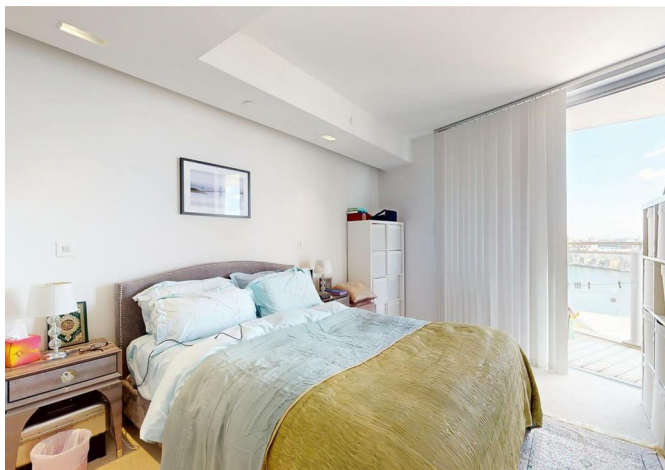




Tidal Basin Road, London, E16 1US

£675,000





Tidal Basin Road, London, E16 1US

£675,000

Barrain London introduces this premium apartment situated on a high floor in the Hoola Building and offering spectacular views of the Docklands.

Comprising two large double bedrooms, two bathrooms, and a modern, stylish, integrated kitchen, the new owner will also appreciate the spacious open plan reception-diner featuring floor to ceiling windows fill the entire space with natural light. Excellent climate control, also, with underfloor heating & comfort cooling. All of this is framed by a wrap around dual aspect balcony with access from the lounge and both bedrooms!

Residents will enjoy the exclusive state-of-the-art gym, residents' lounge and 24-hour concierge service, and great connections with both the surrounding area and greater London. Royal Victoria DLR station, Custom House (Elizabeth Line) station, plus the Jubilee Line connections at nearby Canning Town, put the sights and sounds of Canary Wharf, Stratford shopping, and West End shows a short, convenient train ride away, and makes the commute to the City (or anywhere else) for work quick and easy.

Call to arrange your private viewing today!

Description

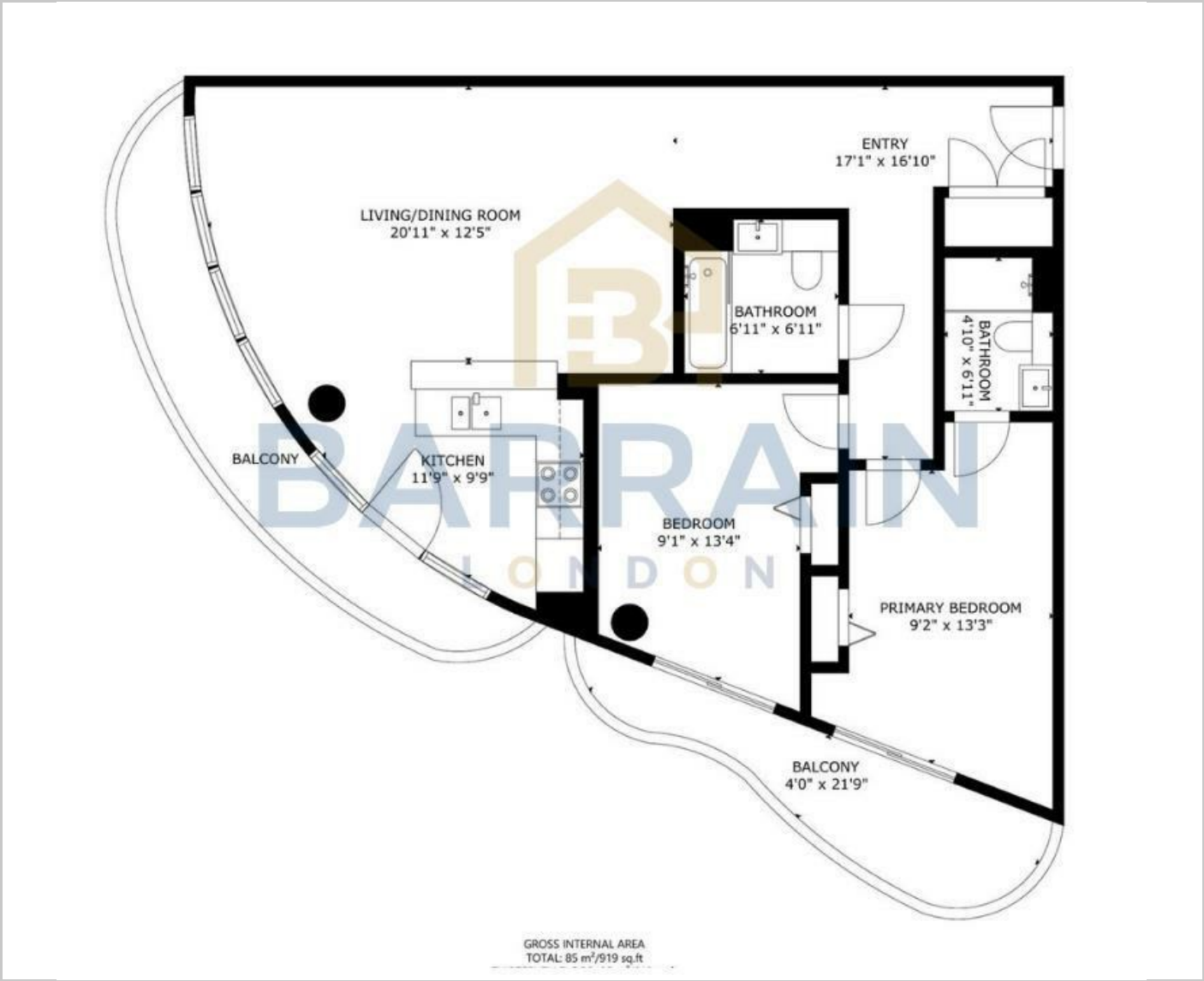
Situation

null  
Council Tax Band: D  
Available:

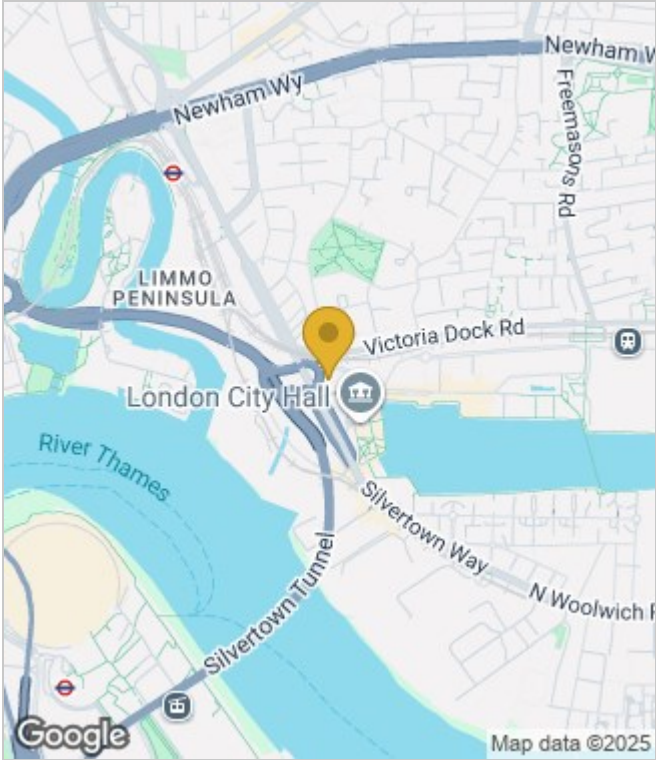




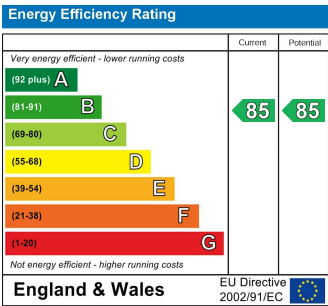
Floor Plans



Area Map



Energy Performance Graph



These particulars, whilst believed to be accurate are set out as a general outline only for guidance and do not constitute any part of an offer or contract. Intending purchasers should not rely on them as statements of representation of fact, but must satisfy themselves by inspection or otherwise as to their accuracy. No person in this firms employment has the authority to make or give any representation or warranty in respect of the property.